

# A46 April box side closure

Three-week window for a full 19 day closure:

- From 8pm on Friday, 11 April until 6am on Thursday 1 May 2025
- With a contingency date set for Friday 16 May 2025, only one date will be used

# About HS2

HS2 is Britain's new high-speed railway, a once-in-a-generation investment in our transport infrastructure. British-built trains will provide reliable, zero carbon travel, cutting journeys between our two biggest cities, London and Birmingham, by 40%. HS2 trains will join the conventional rail network at Handsacre, Staffordshire, continuing to Manchester, the North West and Scotland.

Balfour Beatty VINCI (BBV) is working in partnership with HS2 Ltd to build the new high-speed railway. BBV are responsible for designing and building the West Midlands section of HS2's Phase One route, covering approximately 90km from Long Itchinton in Warwickshire to Lichfield in Staffordshire.

# What is happening in April?

The A46 box structure will carry the new HS2 railway under the A46 near Kenilworth. The structure weighs approximately 15,000 tonnes and is made up of 4,300 cubic metres of concrete.

We are completing construction of the box structure offline adjacent to the carriageway. The next phase of works will be to move the bridge into place using a "box push" technique. To complete this install safely we will require a 19-day closure of the A46:

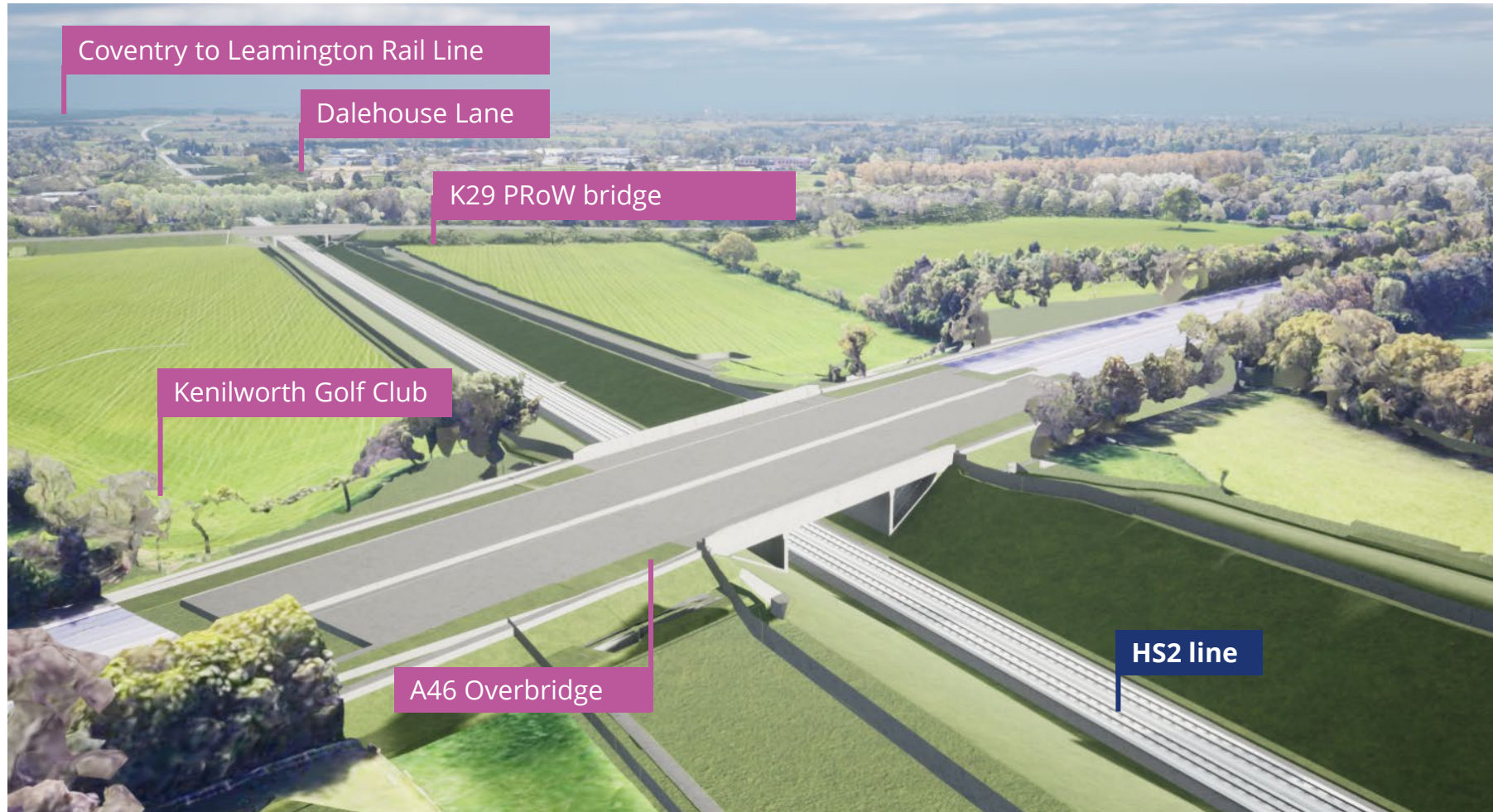
**From 8pm on Friday 11 April to 6am on Thursday 1 May 2025**

A fully signed diversion route will be in place for all road users including HGV's as well as special arrangements for Stoneleigh and Ashow residents.

Please note that we will reopen the road as soon as we have completed our works, and it is safe to do so. Once the structure has been moved into place, lane one restrictions will remain in both directions until 31 July 2025 to safely complete our remaining highway works.

To receive updates about the closures and to effectively plan your journeys, please subscribe to [HS2 in Warwickshire](#)

# A46 Box structure



Visualisation of A46 Box structure near Kenilworth

# How are we helping?

BBV is working with HS2, National Highways and key transport and consenting authorities to plan and deliver these works safely.

Our main aim is to provide a consistent and joined up message for all those people travelling in and around the area and to encourage them to plan their journeys and help reduce congestion.

This toolkit contains some useful information which will help you communicate the closure with your colleagues, customers and clients and compliments a social media marketing campaign.

BBV, HS2 and National Highways are working in partnership to make sure all impacted communities and stakeholders are informed in advance and are aware of the traffic management associated with our works.

This toolkit will enable you to find out more information and provide support to help you plan your journey.

Please share this toolkit with your marketing and communications department to help us inform people of the A46 closure.

If you don't have a specific department, please consider what information you will need to use from this pack, to communicate with your staff, customers and students:

## **Included in this toolkit:**

- Suggested copy suitable for digital channels
- Graphics for digital channels
- Advanced Works Notification

You can also visit our dedicated webpage:

[hs2.org.uk/A46-box-structure](https://hs2.org.uk/A46-box-structure)

# Key messages

## Keeping you informed

Informing stakeholders, communities, businesses, commuters/customers and visitors to Warwickshire and the West Midlands, about the A46 closure, to inform them in advance and help them plan their journeys effectively and minimise impact to their journey

## Minimising disruption

We are building the structure off-line, which means it will be built adjacent to the A46 and pushed in to place in April. This allows free flow of traffic on the A46.

## Keeping you safe

Keeping road users and our workforce safe by not working near the A46 carriageway for an extended period and completing construction activities away from the carriageway wherever possible

## Working in partnership

To work in collaboration with key stakeholders, to plan and deliver co-ordinated, consistent, and timely communication and engagement on the works

# Keeping you moving

## Measures taken during our closures



Fully signed diversion route in place. We design our diversions for all vehicle types and therefore they may not be the shortest route.



Free vehicle recovery will be in place.



Traffic Management crews will be on standby to monitor and deal with any incidents in the area of works and on the diversion routes.



Supported by monitoring from both the National Highways Regional Control Centre and Transport for West Midlands Regional Transport Co-ordination Centre.



National Highways Traffic Officers will patrol wider routes.



To receive updates about the closures, subscribe to [HS2 in Warwickshire](#)



# Strategic diversion route



- Closure
- - - HGV Diversion

Date: 21/02/2025  
Scale: 1:148,386  
A46 Kenilworth Bypass Diversion Route\_ 240102040643-BBVGIS-3081 GS\_BO

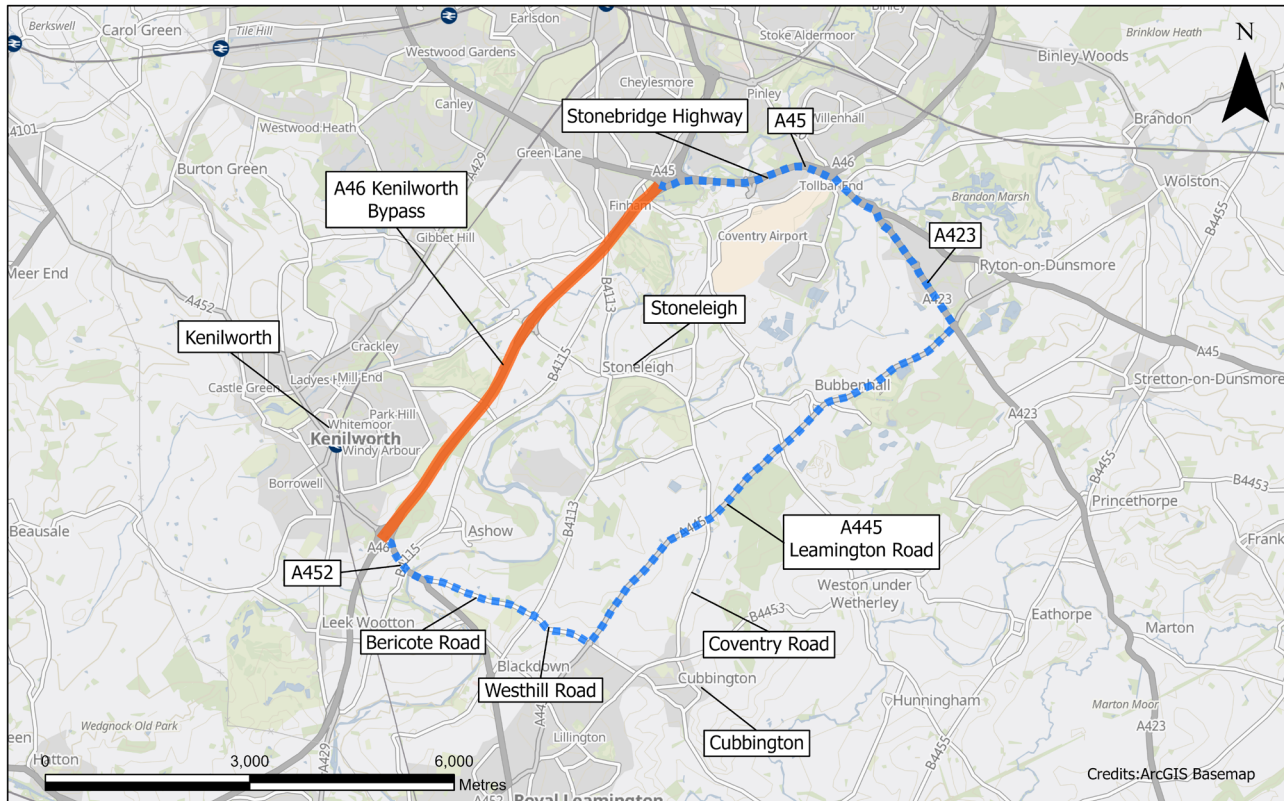
During the closure, all HGVs must follow the diversion route below, HGVs travelling to Coventry and onwards to the north, please use the clearly signed diversion M40, M42, M6 east and then rejoin the A46.

For HGVs travelling to Kenilworth, please leave at the Thickthorn Roundabout (A452).

**+48**

minutes onto existing  
journey times

# Local diversion routes



- Closure
- - - Diversion for local traffic only

Date: 20/02/2025  
Scale: 1:65,000  
A46 Kenilworth Bypass Diversion Route Option Two\_240102042514-  
BBVGIS-3083\_GS\_BO

The A46 carriageway will be closed between the Stivichall Interchange (Festival Island) to the Thickthorn Island (A452 for Leamington and Kenilworth).

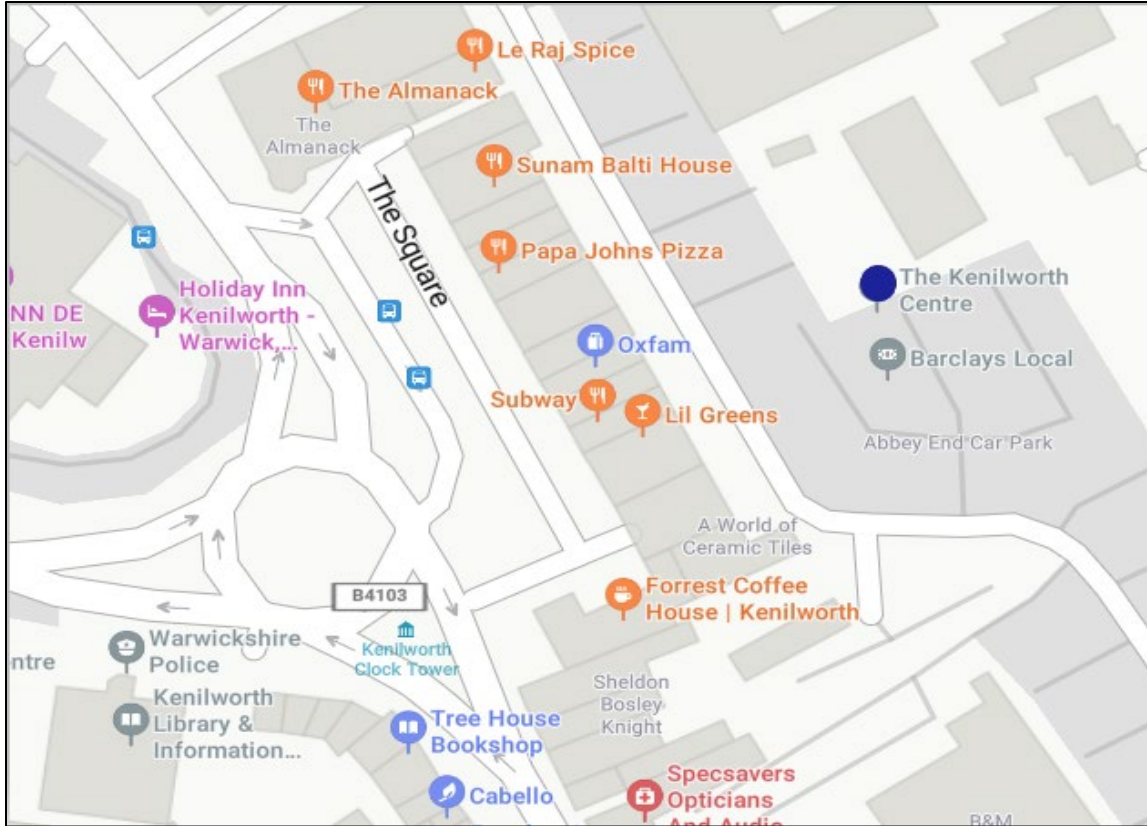
Road users planning to travel to Kenilworth, please leave the A46 at the Thickthorn Roundabout. For northbound traffic and Coventry please leave the A46 at the Thickthorn Roundabout and travel along the A452, Bericote Road and Westhill Road, then use the A445 Leamington Road/ Leicester Lane and join the A423 towards Coventry and the A45 westbound to rejoin the A46.

Road users planning to travel to Ashow and Stoneleigh villages will not be possible from the B4115 Ashow Road at the Chesford Grange junction, this is to ease traffic flows and protect residents.

**+25**

minutes onto existing  
journey times

# Local drop-in event at the Kenilworth Centre

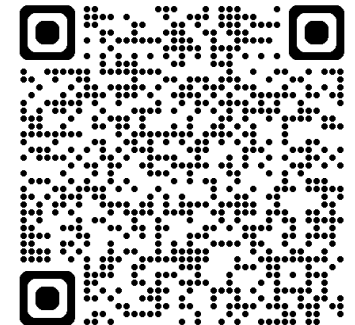


We will have specialists attending to answer your questions about the final A46 works

Come and talk to us on Monday 17 March 2025 between 2 pm and 7 pm.

The Kenilworth Centre  
65 Abbey End,  
Kenilworth  
CV8 1QJ

Please register your interest using the QR code or by visiting: [hs2.org.uk/events](https://hs2.org.uk/events)



# Advanced Works Notice

## [Notice of A46 closure April](#)

## Notice of A46 closure and lane restrictions, near Kenilworth

March 2025 | [www.hs2.org.uk](http://www.hs2.org.uk)

High Speed Two (HS2) is the new high speed railway for Britain. Balfour Beatty VINCI (BBV) is working in partnership with HS2 Ltd to build the new high-speed railway in your area.

### The work we are doing

We will be pushing a new box structure to take the HS2 line under the A46 near Kenilworth. Once the box is slid into place, we will complete the remaining works; resurface the carriageway, reinstate the white lines and safety barriers ready to reopen the A46. While we deliver the works there will be increased construction activity, 24/7 operation, overnight lighting and some additional noise. We will minimise the impact on residents as much as possible.

### When the work will take place

To ensure the safety of our workforce, we will be closing a section of the A46 from the Stivichall Interchange (Festival Island) to the Thickthorn Island (A452 for Leamington and Kenilworth) for 19 days: we will hold three days as a contingency in case of an unforeseen event:

#### 8pm Friday 11 April until 6am Thursday 1 May 2025

Afterwards there will be lane closures on the north and southbound carriageways with a speed restriction of 50mph until Thursday 31 July.

In the event of a programme delay we have a contingency window booked for 8pm Friday 16 May to 6am Thursday 5 June.

### What to expect

A fully signposted strategic diversion for HGVs in the region and a local diversion as well as special access arrangements for the villages of Stoneleigh and Ashow, please see the maps on the next pages.

**Join us for a community drop-in event at the Kenilworth Centre on Monday 17 March between 2pm and 7pm to find out more about the A46.**

**If you have a question about HS2 or our works, please contact our HS2 Helpdesk team on 08081 434 434 or email [hs2enquiries@hs2.org.uk](mailto:hs2enquiries@hs2.org.uk)**

## Notification



### Duration of works

**8pm Friday 11 April – 6am Thursday 1 May** with lane closures afterwards in both directions until Thursday 31 July. Our work is subject to formal consent from National Highways

### What to expect

A full road closure of the A46 with signposted diversion routes suitable for HGVs and local traffic. Increased construction activity overnight and some disruption to journey times during the closure

Follow signed diversions, **do not rely on your Sat Nav for directions**

### What we will do

Keep all sites safe and secure and update you on any changes at: [www.hs2inwarwickshire.co.uk](http://www.hs2inwarwickshire.co.uk)

Call our HS2 Helpdesk team on **08081 434 434**

# Useful contacts

For more information and project updates relating to the works please visit: [hs2.org.uk/A46-box-structure](https://hs2.org.uk/A46-box-structure)

For up-to-the-minute travel information and help planning your journey, please see below:

<b>Plan a journey</b>	Transport for West Midlands	<a href="https://tfwm.org.uk">tfwm.org.uk</a>	<a href="https://twitter.com/TransportForWM">@TransportForWM</a>
<b>Plan a journey</b>	Traveline	<a href="https://traveline.info">traveline.info</a>	<a href="https://twitter.com/travelineEM">@travelineEM</a>
<b>Plan a journey</b>	Warwickshire County Council	<a href="#">Homepage – Warwickshire County Council</a>	<a href="https://twitter.com/warwickshire_CC">@warwickshire_CC</a>
<b>By bus</b>	National Express West Midlands	<a href="https://nxbus.co.uk/west-midlands">nxbus.co.uk/west-midlands</a>	<a href="https://twitter.com/nxwestmidlands">@nxwestmidlands</a>
<b>By train</b>	National Rail	<a href="https://nationalrail.co.uk">nationalrail.co.uk</a>	<a href="https://twitter.com/nationalrailenq">@nationalrailenq</a>

If you require any campaign materials in an alternative format, get in touch: [hs2enquiries@hs2.org.uk](mailto:hs2enquiries@hs2.org.uk)

# Partners

# HS2

HS2 is Britain's new high-speed railway, a once-in-a-generation investment in our transport infrastructure. British-built trains will provide reliable, zero carbon travel, cutting journeys between our two biggest cities, London and Birmingham, by 40%. HS2 trains will join the conventional rail network at Handsacre, Staffordshire, continuing to Manchester, the North West and Scotland. For more information about HS2, please contact our HS2 Helpdesk team on 08081 434 434 or email [hs2enquiries@hs2.org.uk](mailto:hs2enquiries@hs2.org.uk), or for more information about the works we are doing in the Solihull area please visit [www.hs2insolihull.co.uk](http://www.hs2insolihull.co.uk)



Balfour Beatty VINCI is responsible for designing and building part of the most exciting and challenging railway project in Europe: HS2. We are building the West Midlands section of HS2's Phase One route, spanning approximately 90km from Long Itchington in Warwickshire to Handsacre in Staffordshire. We will be employing thousands of people in the area to design and build the civil infrastructure for HS2 through the West Midlands area.



We operate, maintain and improve England's motorways and major A roads. Our roads network is vital to the running of the country and our customers, and their safety remains our priority. We are committed to working with HS2 Ltd and other partners to plan and co-ordinate our works programmes where we can. While HS2 carry out these works we will make every effort to keep you updated and informed in advance of works to help you plan your journeys and help support a better-connected future.

Email: [info@nationalhighways.co.uk](mailto:info@nationalhighways.co.uk)  
General enquiries: 0300 123 5000





# Questions

Find out more

[www.Hs2.org.co.uk](http://www.Hs2.org.co.uk)

Email [hs2enquiries@hs2.org.uk](mailto:hs2enquiries@hs2.org.uk)

freephone 08081 434 434

minicom 08081 456 472